

Pintexx Workplace 4.0

The IT platform
for more digital
independence





Pintexx Workplace 4.0

More digital independence

NEW in version 4.0

Application delivery of Windows applications without terminal server!

ADVANTAGES

- Anytime, anywhere
- Independent of the operating system
- Independent of the browser
- Independent of the device (desktop /mobile)
- Choice between cloud and on premise deployment
- High proportion of open source



The IT platform

2-factor authentication for OWA and integration in Cockpit with Single Sign On!

Over 50 applications can be installed with one click! And much else.

ADVANTAGES

- **Open integration platform for business applications**
- **Completely WEB-based, delivered as a virtual machine**
- **Install application packages (containers) at the push of a button**
- **Device independent – for desktop and mobile devices**





New Concepts

There is no difference between office and home office

User no longer care where they work because access remains the same.

The PC-free office

PCs are now available in the data centre via the PC rack. Access is "remote" and only thin clients & printers are needed in the office.

Desktop as a Service – PC as a Service

A user needs a PC with a custom configuration? With the best possible performance? The solution is just a few mouse clicks away.

Smartphone workplace

People consider PCs as a workplace. Why not use a smartphone instead and save tons of money?

Authentication via electronic identity card

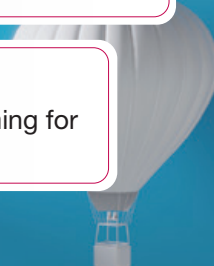
There is a company behind every current authentication method. Why not use the State as the most secure authority?

Smart devices

Hardware and software are part of a complete solution. Our thin clients are perfectly matched to our solution.

Simple Workplace

Current environments are often complicated for users and time-consuming for the admin. Pintexx Workplace is not.



Solutions

Home Office

Workplace Remote: Web VPN provides direct access to the office PC, WTS or VDI.

Software Portal

Workplace Cockpit: Consolidation of all web-based sources in a single portal. This includes Pintexx Workplace applications or customer applications.

Windows™ Deployment

Workplace DEPLOYMENT Remote: Provision of Microsoft™ Windows applications in the browser.

Unified Communication

Workplace Communication: Standards redesigned. WP Communication makes communication easier and safer thanks to its integration with Workplace.

Virtuelles Drive

Workplace Drive: Provision of a virtual drive that can support different sources including SMB, WEB-DAV or S3.

Web-Office

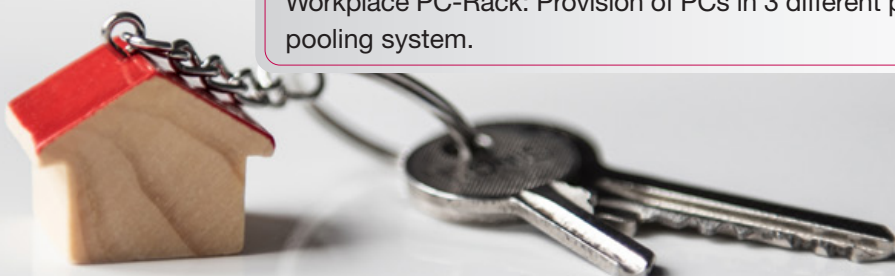
Workplace Office: Alternatively or in addition to Microsoft Office with word processing, spreadsheet and presentation software.

Authentication

Workplace Remote/Cockpit: Provision of a large number of authentication options and 2-factor connections including registration with an electronic identity card.

Desktop as a Service

Workplace PC-Rack: Provision of PCs in 3 different performance classes including pooling system.





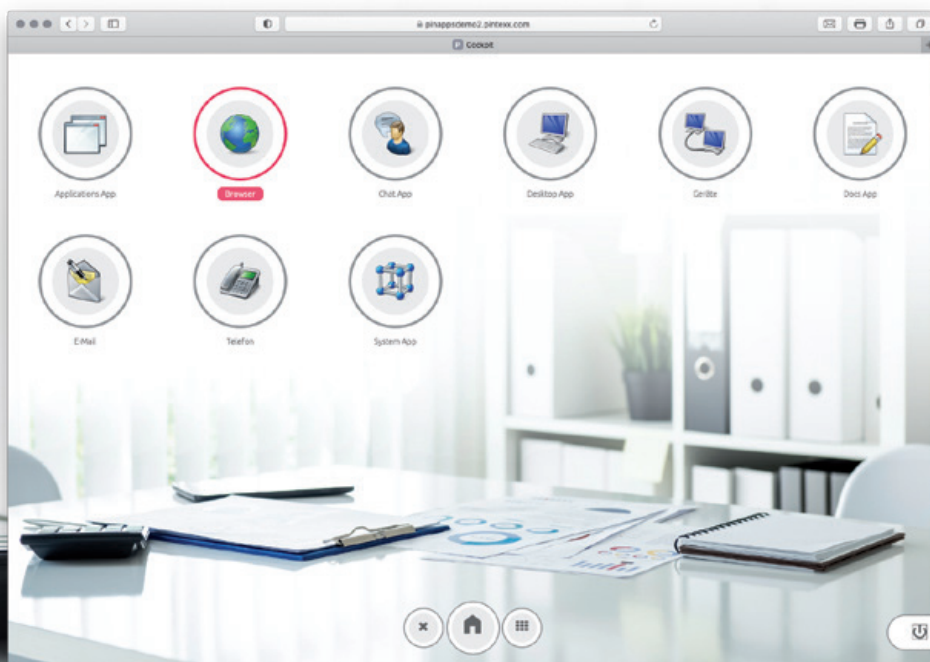
Pintexx Workplace 4.0 – Software

WEB desktop and central Authentication system

Pintexx "Cockpit"

ADVANTAGES

- WEB desktop with very simple operation
- Authentication via the electronic identity card
- Other authentication methods
- Integration of all web applications in the network
- Two-factor authentication
- Single-Sign-On



From VPN to browser-based desktop access

Pintexx Workplace "Remote"

ADVANTAGES

- No client installation is necessary
- 100% separation of private and business use
- No foreign servers
- Consistent encryption via SSL
- Scalable up to several thousand users
- Connection to available systems
- Significant cost advantages over VPN





Phone and contacts

Pintexx "Phone"

ADVANTAGES

- Telephone integration through connection to the telephone system
- Only one SIP account required
- Contacts can be used from "Contacts" via custom address books
- Address books can also be created from Microsoft Office 365/Exchange or LDAP
- Encrypted phone calls



Video conference

Pintexx "Video"

ADVANTAGES

- Videoconference system with up to 100 participants
- HD Audio and Video
- End-to-end encryption
- Invitations via link
- Share screen with multiple users
- Integrated chat system
- Scalable





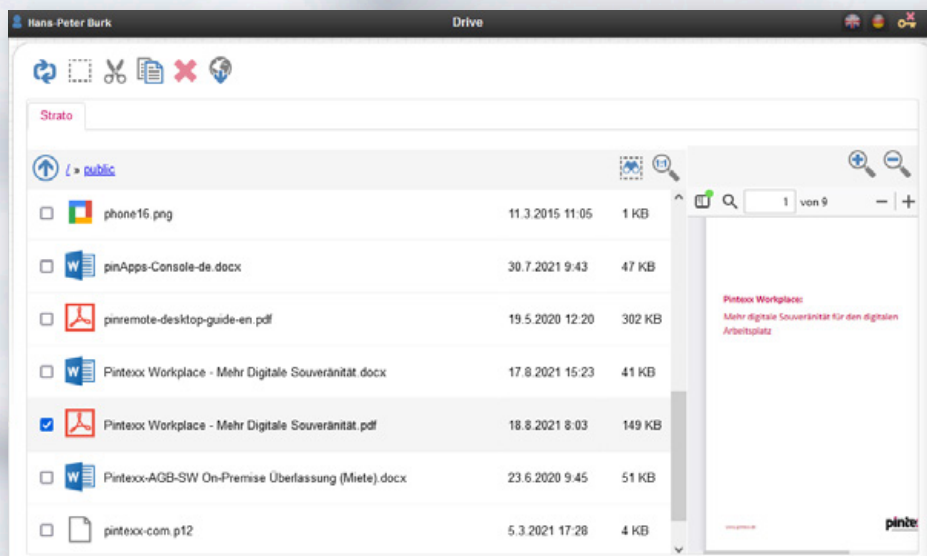
Pintexx Workplace 4.0 – Software

Virtual drive

Pintexx "Drive"

ADVANTAGES

- Virtual drive with access to external storage systems
- File explorer functions
- Multiple drives per user (share)
- Integrated online editing of files
- Conversion to PDF
- File operations between shares
- Connection via WebDAV, SMB and S3
- Integration with Microsoft Office



Email system

Pintexx "Mail"

ADVANTAGES

- Complete email server with email, appointments and contacts
- Direct connection to IMAP or SMTP server
- Open/save files via "Drive"





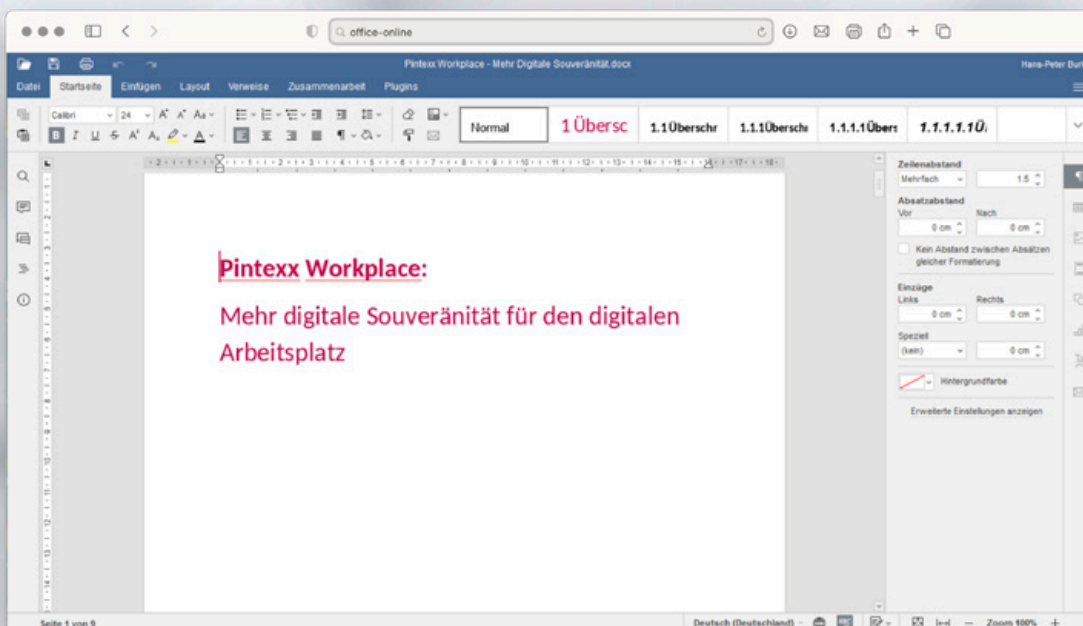
Pintexx Workplace 4.0 – Software

Online office plattform

Pintexx "Office"

ADVANTAGES

- The MS Office compatible office solution in the browser
- Word processing for .docx documents
- Spreadsheet for .xlsx documents
- Presentations for .pptx documents
- With access to "Drive" for loading and saving files
- Simultaneous editing of documents with several users
- Integrated PDF conversion

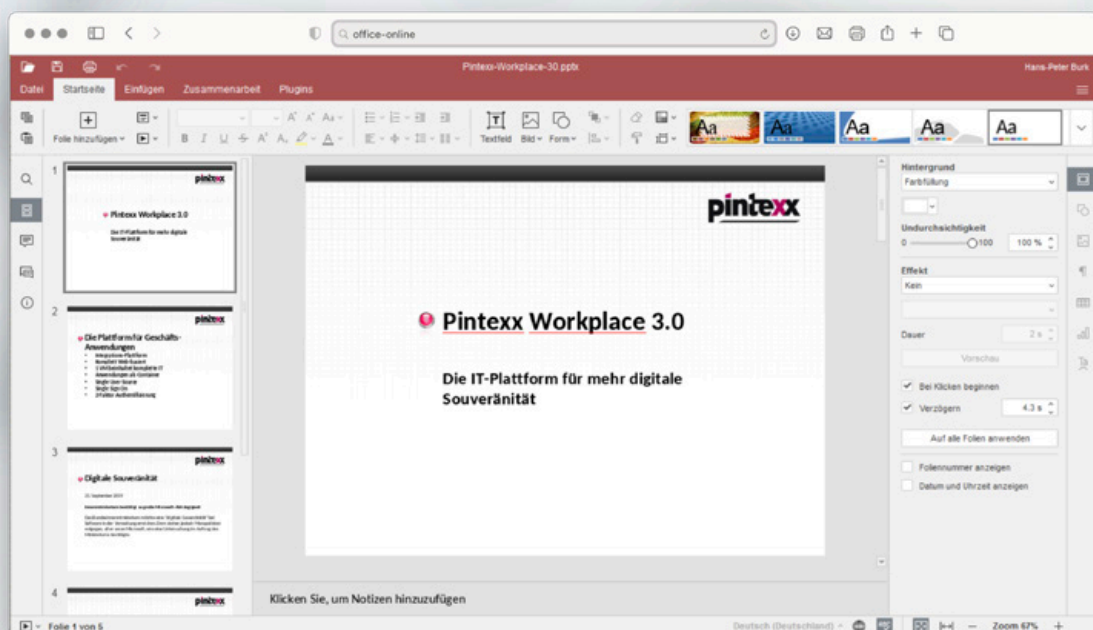


Word processing

The screenshot shows a web-based spreadsheet application with a menu bar (Datei, Startseite, Einfügen, Layout, Formel, Daten, Pivot-Tabelle, Zusammenarbeit, Tabellenansicht, Plugins) and a toolbar. The spreadsheet contains the following data:

Segment	Country	Product	Discount Band	Units Sold	Manufacture	Sale Price	Gross Sales	Discounts
Government	Canada	Carretera	None	1618,5	\$ 3,00	\$ 20,00	\$ 32.370,00	\$ -
Government	Germany	Carretera	None	1321	\$ 3,00	\$ 20,00	\$ 26.420,00	\$ -
Midmarket	France	Carretera	None	2178	\$ 3,00	\$ 15,00	\$ 32.670,00	\$ -
Midmarket	Germany	Carretera	None	888	\$ 3,00	\$ 15,00	\$ 13.320,00	\$ -
Midmarket	Mexico	Carretera	None	2470	\$ 3,00	\$ 15,00	\$ 37.050,00	\$ -
Government	Germany	Carretera	None	1513	\$ 3,00	\$ 350,00	\$ 529.550,00	\$ -
Midmarket	Germany	Montana	None	921	\$ 5,00	\$ 15,00	\$ 13.815,00	\$ -
Channel Partners	Canada	Montana	None	2518	\$ 5,00	\$ 12,00	\$ 30.216,00	\$ -
Government	France	Montana	None	1899	\$ 5,00	\$ 20,00	\$ 37.980,00	\$ -
Channel Partners	Germany	Montana	None	1545	\$ 5,00	\$ 12,00	\$ 18.540,00	\$ -
Midmarket	Mexico	Montana	None	2470	\$ 5,00	\$ 15,00	\$ 37.050,00	\$ -
Enterprise	Canada	Montana	None	2665,5	\$ 5,00	\$ 125,00	\$ 333.187,50	\$ -
Small Business	Mexico	Montana	None	958	\$ 5,00	\$ 300,00	\$ 287.400,00	\$ -
Government	Germany	Montana	None	2146	\$ 5,00	\$ 7,00	\$ 15.022,00	\$ -
Enterprise	Canada	Montana	None	345	\$ 5,00	\$ 125,00	\$ 43.125,00	\$ -
Midmarket	United States of America	Montana	None	615	\$ 5,00	\$ 15,00	\$ 9.225,00	\$ -
Government	Canada	Paseo	None	292	\$ 10,00	\$ 20,00	\$ 5.840,00	\$ -
Midmarket	Mexico	Paseo	None	974	\$ 10,00	\$ 15,00	\$ 14.610,00	\$ -
Channel Partners	Canada	Paseo	None	2518	\$ 10,00	\$ 12,00	\$ 30.216,00	\$ -
Government	Germany	Paseo	None	1006	\$ 10,00	\$ 350,00	\$ 352.100,00	\$ -
Channel Partners	Germany	Paseo	None	367	\$ 10,00	\$ 12,00	\$ 4.404,00	\$ -
Government	Mexico	Paseo	None	883	\$ 10,00	\$ 7,00	\$ 6.181,00	\$ -
Midmarket	France	Paseo	None	549	\$ 10,00	\$ 15,00	\$ 8.235,00	\$ -
Small Business	Mexico	Paseo	None	788	\$ 10,00	\$ 300,00	\$ 236.400,00	\$ -
Midmarket	Mexico	Paseo	None	2472	\$ 10,00	\$ 15,00	\$ 37.080,00	\$ -
Government	United States of America	Paseo	None	1143	\$ 10,00	\$ 7,00	\$ 8.001,00	\$ -

Spreadsheet



Presentation



Pintexx Workplace 4.0 – Hardware

Optimised Thin Clients

Thin Phone



Workplace with smartphone,
USB-C dock, external monitor
and Pintexx Workplace app

Thin Station



Workplace with Pintexx Workplace
ThinClient and two monitors



Pintexx "Thin Clients"

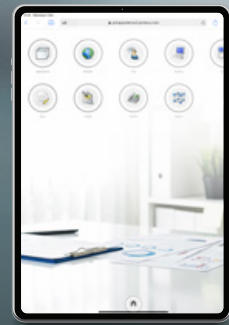
ADVANTAGES

- One operating system for all devices
- Integrated telephone via Workplace "Phone"
- Central administration of all devices via "Device"
- Cockpit as a desktop
- Access to Windows desktop via "Remote"
- For office and home office

Thin Stick



Secure Boot/Thin Client for all INTEL devices



Tablet with Pintexx Workplace App



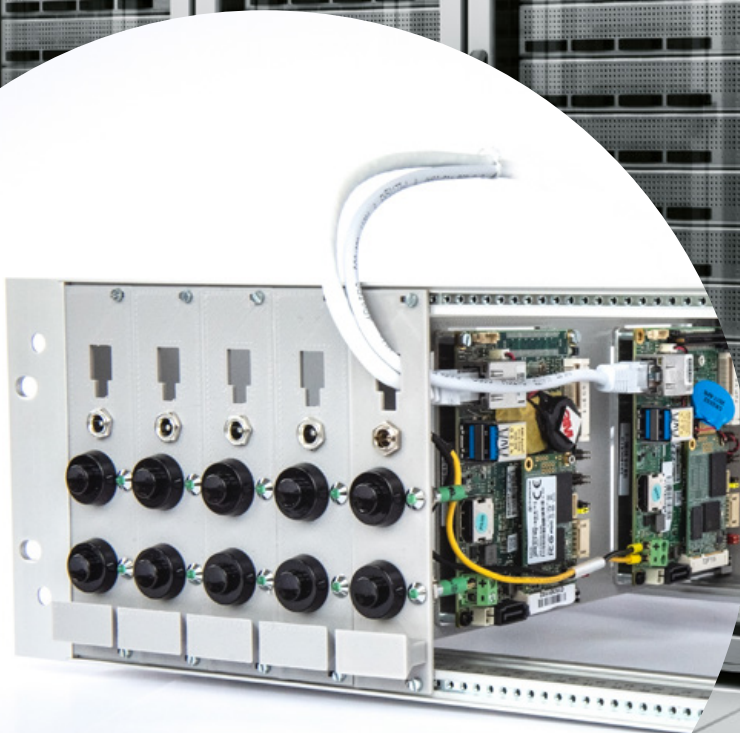
Pintexx Workplace 4.0 – Hardware

The PC in the data centre

Pintexx "PC Rack"

PC/DESKTOP as a Service

- PC as needed
- Remote access
- 20 PCs per rack in 3U
incl. separate power supply 1U



Terminal Server / VDI alternative

ADVANTAGES

- No TS-licenses required
- Full device power per user
- Reuse as a business device

PC POOL

- Software controls access to free PC
- Switch on as required
- Switch off after use
- High level of security against failure
- High energy efficiency

REDUCTION IN THE
NUMBER OF PCS
REQUIRED UP TO 50%





Identification services



**Electronic
ID card as
universal medium.**

Authenticate

We enable the use of the electronic identity card in almost every WEB application and secure authentication as a replacement for previous methods.

Identify

Our SDK enables the ID card data to be read out and thus people authentication.

Signing

(from 2022)

Creation of a qualified digital signature with the help of the electronic identity card.

Advisory services

Create application packages (container)

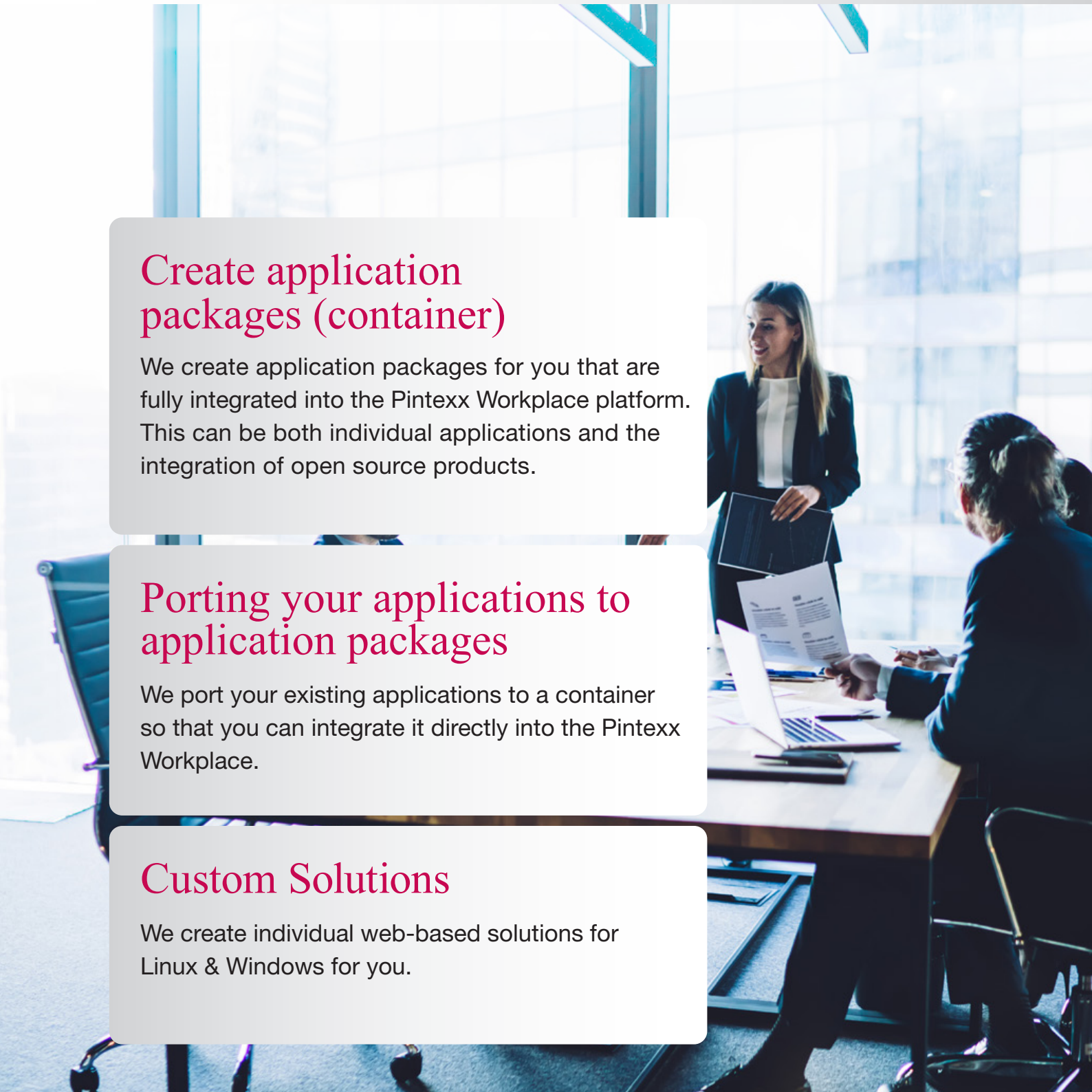
We create application packages for you that are fully integrated into the Pintexx Workplace platform. This can be both individual applications and the integration of open source products.

Porting your applications to application packages

We port your existing applications to a container so that you can integrate it directly into the Pintexx Workplace.

Custom Solutions

We create individual web-based solutions for Linux & Windows for you.



SECURE INDEPENDENT COST EFFECTIVE



www.pintexx.de

Made in Germany

SPECIAL

Trial version

Free, unlimited trial version for 30 days via download.

Live Demo:

workplace.pintexx.com

Licensing

Flexible licensing as subscription or fixed price.

Support

We will be pleased to support your installation and configuration process.

Services

- Non-binding online or in-house presentation
- Comprehensive range of services
- Individual advice

pintexx

Pintexx GmbH

Schindersgrube 1
D-74388 Talheim

Tel.: +49 (0) 7133 / 95 79 59 0

Fax: +49 (0) 7133 / 95 79 59 1

Sales Partners: